



# EasiDrive portable valve actuator for gearbox operated valves



## Operate gearbox valves smarter and faster



### Why use a portable valve actuator?

Gearboxes make manual multi-turn valves easier to operate, but at a cost. They often require hundreds of turns to fully open or close a valve, which can be slow, physically demanding, and pose risks for operators. The strain is even greater in unergonomic positions or extreme conditions like heat or cold.

A portable actuator addresses these challenges directly. It significantly reduces operator effort, accelerates valve operation, and improves overall safety and efficiency. All without requiring a permanent motorized system.



### EasiDrive portable valve actuator

The Sofis EasiDrive is engineered for safe, efficient, and straightforward valve operation. Its integrated reaction arm eliminates the need for chains or manual supports, cutting setup time and minimizing risk. Trusted by operators worldwide, EasiDrive offers a smarter and safer way to manage manual valves, with less strain and greater productivity.

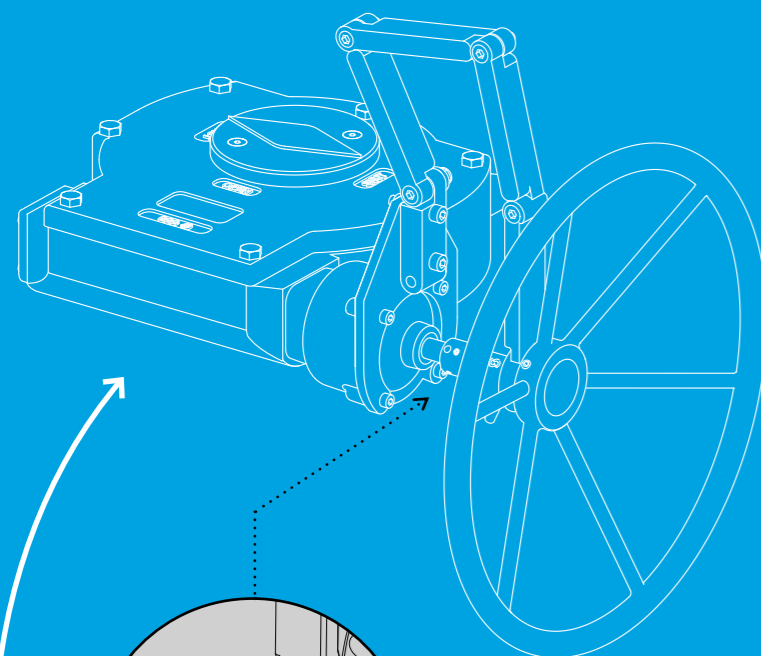
*Switch between handwheel and EasiDrive operation in seconds, no tools needed*

## Adaptor and reaction kit for common gearbox operated valves

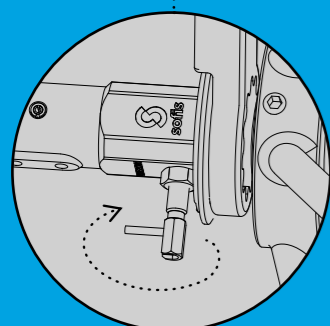


With the EasiDrive portable valve actuator, you easily handle hard-to-operate and time-consuming valves without expensive actuators. For standard valve gearbox sizes, the EasiDrive can be used with an adaptor and reaction kit specifically engineered for seamless integration. It enables fast, efficient operation as a reliable part of the EasiDrive system, making the switch from handwheel to torque tool operation almost instant.

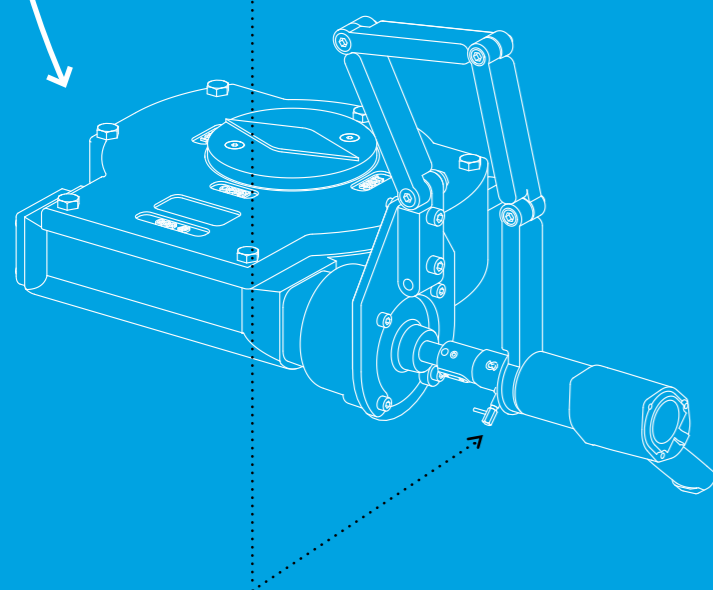
## How it works



The adaptor and reaction arm kit is permanently installed on the gearbox. The handwheel mounts directly onto the square drive and is secured using a quick-release pin, always allowing the manual operation of the gearbox.

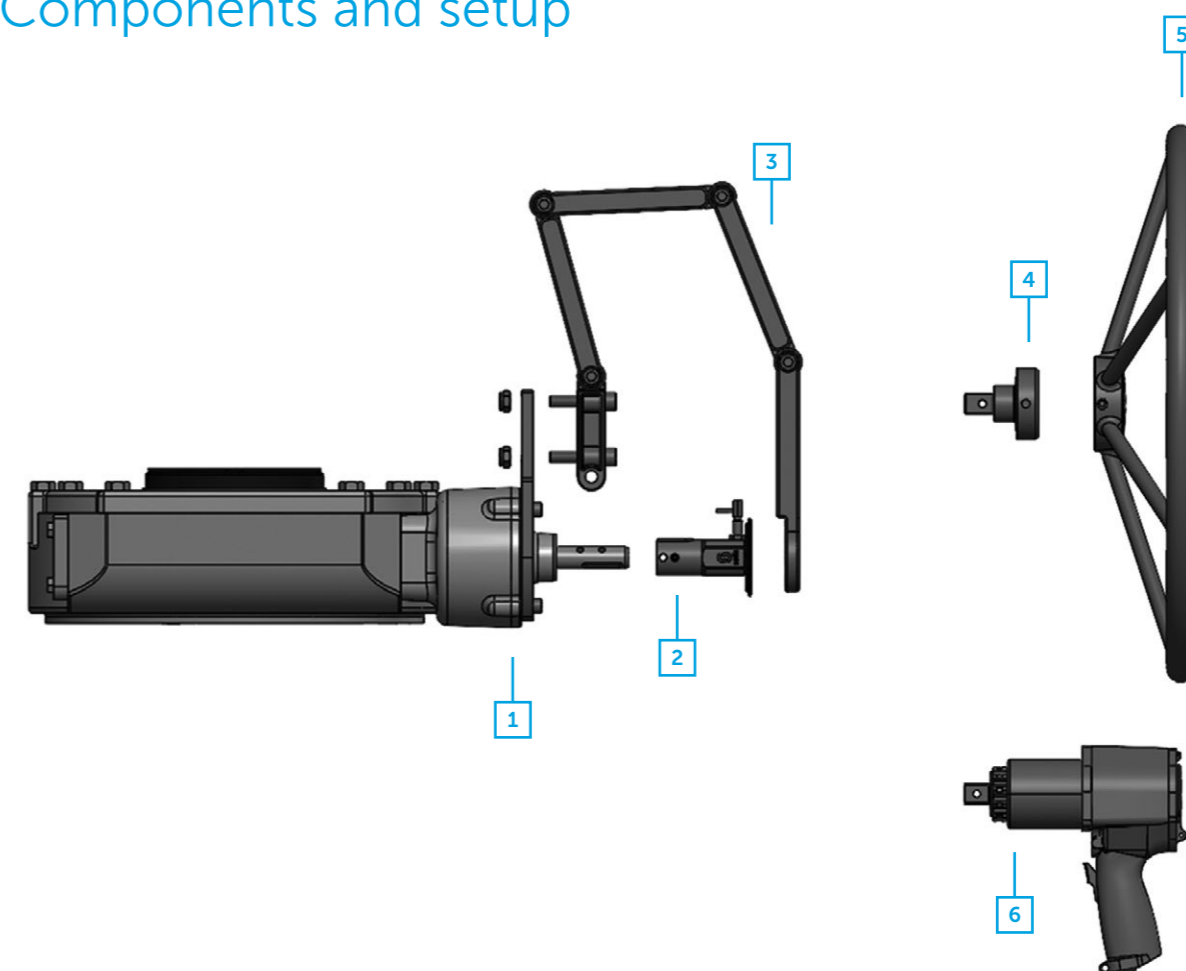


Switch between handwheel and EasiDrive operation in seconds, no tools needed. A quick-release pin holds the handwheel securely, but allows one-finger locking or removal of the tool or handwheel.



To operate the valve with a torque tool, simply remove the handwheel by releasing the quick-connector pin. Insert the EasiDrive tool into the square drive and lock it in place using the same pin. After operation, the tool is removed, and the handwheel is reattached, quickly and without tools.

## Components and setup



The standard gearbox adaptor and reaction arm kit is designed for gearboxes with axle diameters of 20 mm, 25 mm, or 30 mm. It includes the following components:

### 1. Reaction plate

- Custom-designed to match the mounting pattern of the specific gearbox.

### 2. Gearbox adaptor

- Features a square drive for attaching either the handwheel or torque tool.
- Equipped with a quick-release retention pin for one-finger locking and release of the handwheel or tool.

### 3. Reaction arm

- Mounted on the reaction plate and includes multiple segments to suit different layouts.
- Contains a fitting segment to secure the tool head during operation.

### 4. Handwheel adaptor

- Screws onto the original gearbox handwheel or a Sofis handwheel.
- Incorporates a square drive that fits into the gearbox adaptor.

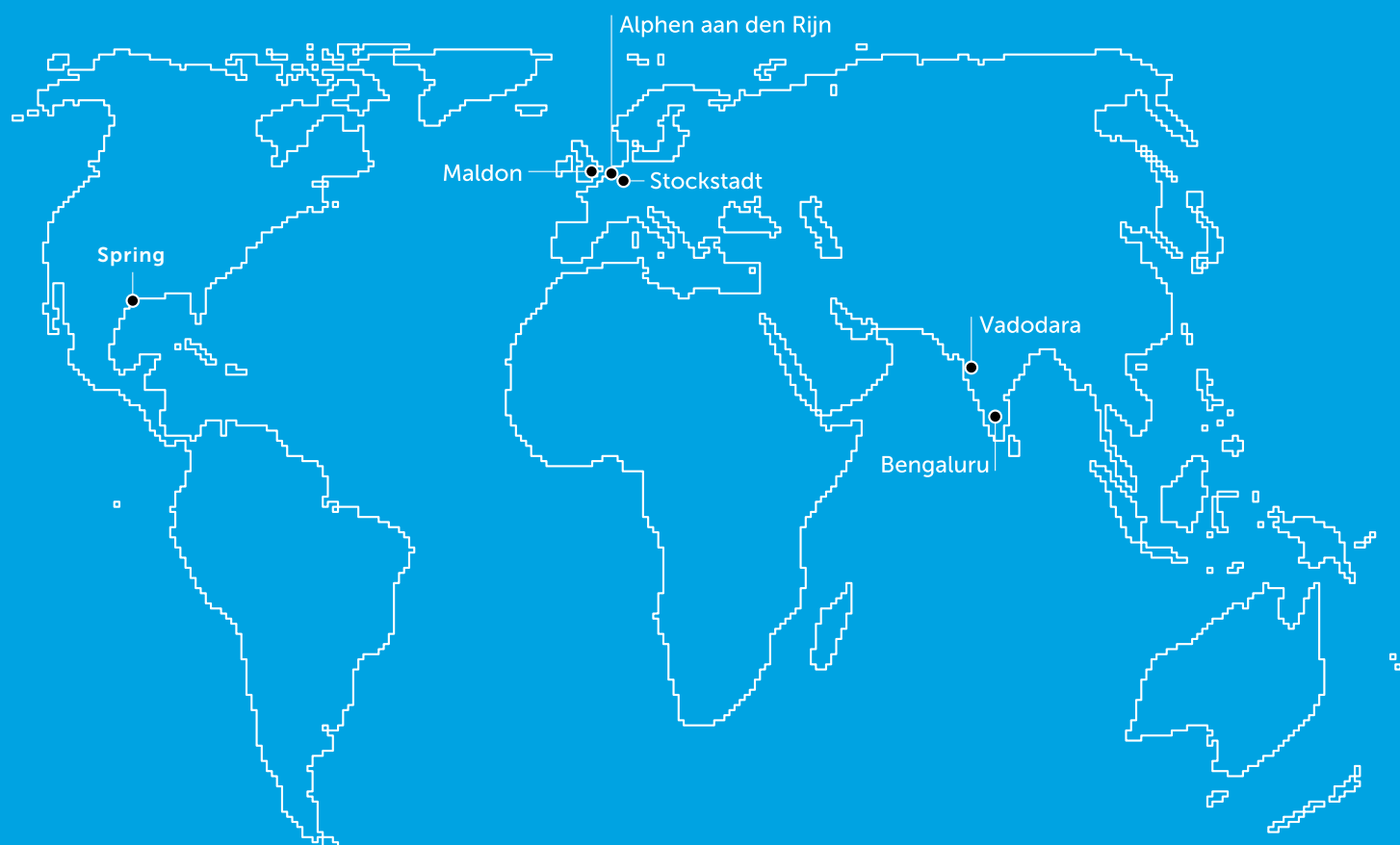
### 5. Handwheel

- Can be the original gearbox handwheel or a new unit from the Sofis range.
- One handwheel with adaptor can be used across multiple gearboxes, helping reduce weight, buildup, and overall cost.

### 6. EasiDrive Torque tool

- Compatible with any EasiDrive actuator (pneumatic, battery-powered, or electric).
- Supports up to 500 Nm of input torque for safe and efficient operation.

We are Sofis, the leading valve operation specialists. With our expertise we offer smart integrated solutions to optimise valve operation. Our products help create a safer and more efficient working environment and are often regarded as the industry standard. We work closely with our customers and provide simple and reliable solutions.



#### Follow us:

[www.sofisglobal.com](http://www.sofisglobal.com)

YouTube: Sofis valve operation

LinkedIn: Sofis valve operation

#### Locations

Alphen aan den Rijn, Netherlands

Stockstadt, Germany

Maldon, UK

Vadodara, India

Bengaluru, India

Spring, USA

P-EAD-E-BR-25-06-001-01-EN



#### Contact

[www.sofisglobal.com/contact](http://www.sofisglobal.com/contact)

[marketing@sofisglobal.com](mailto:marketing@sofisglobal.com)

+31 (0)172 471 339



No accidents.  
No injuries.  
No downtime.  
No spills.  
No loss.