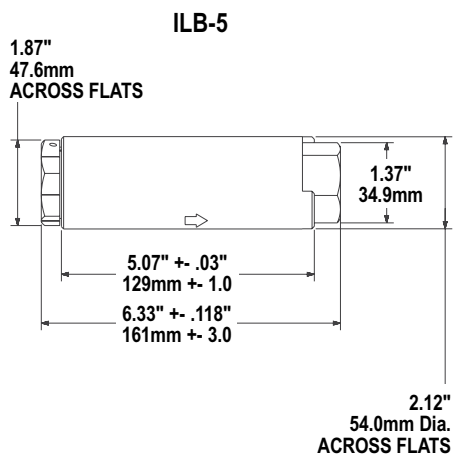


OPW In-Line Breakaway (ILB-5) - Heavy-Duty Truck/Bus

OPW has developed an in-line breakaway that can be used in heavy-duty truck and bus NGV refueling applications. This unit will function consistently, independent of the inlet pressure.



Materials

Body: Stainless steel
Internal Components: Stainless steel
Seals: Specially formulated polymers and elastomers specific to high-pressure NGV applications.



Features

- ◆ **Durable, Corrosion-Resistant Construction** - stainless steel and specially plated steel construction provide improved durability and corrosion resistance in harsh environments.
- ◆ **Reconnectable Design** - allows the component to be reused, reducing maintenance costs.
- ◆ **Innovative Valve System** - the sealing system in this breakaway minimizes the amount of vent gas released during a drive-away incident.
- ◆ **High-Flow/Super Fast Fill Capacity** - this is OPW's fastest flowing breakaway. This breakaway will provide quick fueling of large storage vehicles. Internal seals are specifically designed to meet the demands of fast-fill NGV fueling.
- ◆ **Easy Installation** - the in-line breakaway has SAE-10 O-ring fittings for easy installation in line between the dispenser and nozzle.
- ◆ **Individually Inspected, Leak and Breakaway Tested, with Traceable Serial Numbers**
- ◆ **Disconnection Force** - 150 lbs. (668 N).

Specifications:

Min. Flow Rate: 5500 SCFM @ 3000 psid
 Temperature Range: -40° F to 185° F
 (-40° C to 85° C)
 Weight: 5 lbs. (2.26 kg)
 Cv: 3.6

Ordering Specifications

• Recommended to be used with the CC250, CC300, CC600 and CT1000 Series NGV-1 CNG Nozzles

| Product No. | Inlet Thread Size | Outlet Thread Size | Max. Allowable Service Pressure | |
|-------------|---------------------------------|---------------------------------|---------------------------------|-----------|
| ILB-5 | SAE - 10, 7/8 - 14 UNF (female) | SAE - 10, 7/8 - 14 UNF (female) | 4532 psi (P36) | 312.5 bar |